



Ship to Shore

April 19 – May 30, 2024

From calm waters to crashing waves, open seas to secluded marshes, this annual exhibition celebrates the marine genre, encompassing a broad range of subjects related to the sea and its surrounding environment. The exhibition welcomes a variety of artistic styles and mediums, but artists are encouraged to submit representational work that clearly connects to nautical and marine themes.

Open to: All member artists

Juror: [Karen Blackwood](#)

Prizes: 1st \$500, 2nd \$250, 3rd \$125 plus three award of merit

Individual & Associate artist entry fee: \$25 for 1 piece, \$10 for each addition. Artists may submit up to 4 pieces total.

Elected artist Entry Fee: \$30 for up to 4 pieces total.

Receiving Dates: At LAA, Fri., Sat., & Sun., April 12, 13, & 14, 10 am - 5 pm

Acceptance List will be posted on lymeartassociation.org Wednesday April 17th at 5pm

Opening Reception: Fri, April 26, 5 - 7 pm

Removal Dates: Fri., Sat., & Sun., May 31, June 1, & 2, am - 5 pm

ENTRY REQUIREMENTS

- You must be a member of LAA to submit. Membership must be current.
- All art must be representational in nature with recognizable forms.
- All work must be for sale, be framed or gallery wrapped (edges must be finished), signed on front or back and wired for hanging (no sawtooth hangers). Work must look professional in presentation.
- **SIZE LIMITATIONS - nothing larger than 48" in either direction.**
- Work must be original in concept and created in the last 3 years.
- Photographs, off-set lithographs, and other prints made using xerographic, digital, or photographic processes will not be considered unless outlined in the prospectus. Hand pulled prints (etc, relief, monotype, intaglio) are allowed.
- No reproductions of stock images, historic photos, or of any reference to which you do not hold total copyright are allowed. All copyright laws must be followed.
- AI generated work will not be accepted.
- **Information for Sculptors:**
 - Sculptures must be no more than 80" vertically, 36" and 36" deep and must weigh less than 100 lbs
 - Sculpture submissions may be submitted online 1 week before the drop off date if preferred. To do this please use the online submission form for sculptors.
 - <https://lymeartassociation.org/sculpture-artwork-entry-form/>
 - Early online submissions for sculptors are optional. If you prefer to drop off work in person you may do so in-person during receiving weekend.
- Work that has been shown in a previous LAA juried exhibition or work that was created under tutelage may not be submitted.
- All work will be juried with no guarantees. LAA reserves the right to not include any piece submitted for entry.
- NO WET PAINTINGS!
- LAA reserves the right to rent the gallery for events and to move work, if necessary, for these events. While the utmost care will be taken in handling all works, the LAA, its directors and agents assume no liability for damage, loss, or theft of submitted work. All artists are responsible for insuring their own work.

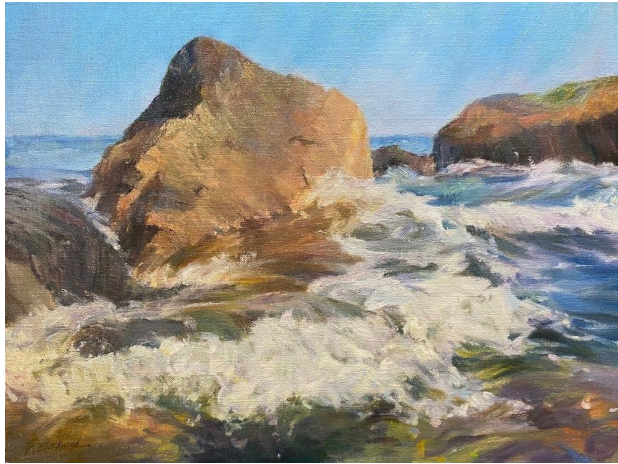
- Artists agree to commit accepted work for the duration of the exhibition.
- Artwork left at LAA for more than 90 days after the end of the exhibition period will become the property of LAA
- Artwork submitted for an exhibition at LAA may be photographed by LAA staff for marketing or inventorying purposes.
- The submission of work to the exhibition constitutes an agreement on the part of the artist or artist's agent to these conditions

TERMS AND CONDITIONS for SALE OF ARTWORK: Checks and credit card payment for purchase of artwork, including CT sales tax, shall be made out to the LAA.

If artwork is sold, 35% of the sale price will be retained by the LAA and 65% of the sale price will be remitted to the artist by check from LAA. The LAA will retain and remit the sales tax. As a not-for-profit organization, the LAA provides the artist with an opportunity to exhibit but does not assume the role of an agent or representative.

About the Juror

Karen Blackwood



Trained in the classical tradition, Karen painted portraits and figurative work before focusing on landscapes. Feeling light is a defining factor in the landscape, it is the atmospheric quality of the light she captures in her paintings. Her work is a desire to paint what inspires her and to capture the very essence of the scene. Now living in Newburyport, Massachusetts, the coastal scenery is providing her with endless inspiration for her marine work, garnering her a multitude of awards including these recent top awards - Best Water Award in the Plein Air Salon, Award of Excellence in the 2020 Eastern Oil Painters of America Exhibition, Second

Place in the March Bold Brush Competition, First Place in the Spring Oil Painters of America Online Showcase and The Seascape Award of Excellence in the 28th National Juried Oil Painters of America exhibition in St. George, Utah.

Karen's paintings have been included in museum and nationally juried exhibitions including the Marine Art Society National Marine Exhibition, touring 6 museums Nationwide, The Channel Islands Maritime Museum Exhibit, The Cultural Center of Cape Cod Special Exhibit showcasing the region's Finest Marine Artists, the Huntington Museum of Art, The Pasadena Historical Society and the California Art Club. Solo Shows at the Todd Bonita Gallery in Portsmouth, N.H., The Birmingham Community House, The BUC in Bloomfield Hills, MI and The Saline Art Center in Saline, MI.

Her paintings and her work are in multiple publications, including The Artist's Magazine, International Artist Magazine, Fine Art Connoisseur, American Art Collector Magazine, Southwest Arts Magazine, American Society of Marine Artist Quarterly Magazine now in the Smithsonian Archives, Oil Painters of America Newsletter, The NY Times and the LA Times.

Karen is teaching a workshop, *Essence of the Sea*, at LAA July 8 - July 11, 2024. [More information is available here.](#)