



**Happy New Year!** As we begin a new year at the Lyme Art Association, I want to extend my deepest thanks to everyone who makes this organization thrive — our dedicated staff, generous volunteers, talented artists, supportive partners, and loyal members and donors. Because of you, LAA continues to be a vibrant gathering place for creativity, learning, and community. I am profoundly grateful for the time, energy, and belief you invest in this special place.

This January, our guiding theme is “Broadening Our Base.” We are taking a thoughtful look at how we can be more inclusive and welcoming as an organization — and how we can serve a wider range of artists, art lovers, students, visitors, collectors, and neighbors while staying true to our mission. We are asking: How can we grow our membership in ways that invite more people into the LAA community, both artists and non-artists? How can we shape educational programs that reflect what our members want and what our community needs? How can we expand the circle of visitors and collectors who discover and support the remarkable work created here?

A key part of this conversation is accessibility. We are committed to making our historic building more welcoming and usable for people of all abilities — so that everyone can experience exhibitions, attend programs, participate in classes, and feel fully included at LAA. In the coming months, you’ll hear more about our efforts to plan for meaningful accessibility improvements, and we look forward to engaging our community in this important work. If you have ideas about how LAA can better serve you or our wider community, I would love to hear from you.

Thank you for being part of the Lyme Art Association — a place where artistic excellence and community connection have flourished for generations. We are excited for the year ahead, and we hope you’ll join us as we broaden our base and build an even stronger future together.

Warmest regards, Elsbeth Dowd, Ph.D., Executive Director



## Upcoming - Save the Dates!

### An Exhibition in Four Acts:

**This Land Is Your Land, Animal Kingdom, Stillness, & Abstracted**, Feb. 27 - April 10  
Digital Entry Deadline: January 30  
Opening Reception: Sun, March 1, 2 - 4 pm

### Ship to Shore & A Closer Look

**April 17 - May 29**  
Digital Entry Deadline: March 20  
Opening Reception: Sun, April 19, 2 - 4 pm

### Spring Soiree Fundraiser

**Saturday, May 16, 5 - 7 pm**

### A Connecticut History, June 5 - July 17

Digital Entry Deadline: May 8  
Opening Reception: Sat, June 13, 5 - 7 pm

### Hudson Valley Art Association 93rd Annual Juried Member Show, June 5 - July 17

Opening Reception: Sat, June 13, 5 - 7 pm

### Swing for Art Pickleball Tournament Fundraiser - Sunday, June 7

### Family Day, Saturday, June 20.

### Old Lyme Midsummer Festival, Sat., July 25

### Elected Artist Applications

August, dates to be announced.

### 105th Elected Artist Exhibition and

### Expanding Visions, July 24 - September 11

Digital Entry Deadline: June 26  
Opening Reception: Sat, August 1, 5 - 7 pm

### New Haven Paint & Clay Club Select

### Members Exhibition, July 24 - September 11

Opening Reception: Sat, August 1, 5 - 7 pm

### Paint the Town Plein Air Day & Reception

August, dates to be announced.

### New England Landscape & Bon Appetit

### September 18 - November 6

Digital Entry Deadline: August 21  
Opening Reception: Sun, Sept. 20, 2 - 4 pm

### Plein Air Group Show, Dates to be announced

### Lyme Art Association Annual Membership

Meeting, Wed, Oct 7, 5:30 pm

### Palate to Palette Fundraiser and Party,

Thursday, October 15, 6 - 9 pm

### Pumpkin Day, Saturday, October 24

### Deck the Walls, November 13 - January 1

Digital Entry Deadline: October 9  
Opening Reception: Sun., Nov 22, 2 - 4 pm

### Connecticut Pastel Society: Renaissance in Pastel, November 13 - January 1

Opening Reception: Sun., Nov 22, 2 - 4 pm

Details at [www.LymeArtAssociation.org](http://www.LymeArtAssociation.org)

## From Board President Michael Centrella

And so, it begins once again! Welcome to 2026, a new year for LAA, and an opportunity to build further on a highly successful 2025. All thanks to our members, artists, board and staff. You know how spectacular our shows are, how well they are mounted and how well they are attended. You know how active LAA is on a normal “business” day, with art lovers walking the galleries, with artists and instructors populating our popular classes and workshops, and with staff members pointing us all in the right directions. You know how much more goes on within our walls, with special events, presentations, and galas. We had LAA’s annual meeting back in the fall. There you learned the details of all of this, and there you saw evidence for LAA’s current financial health. It only gets better.

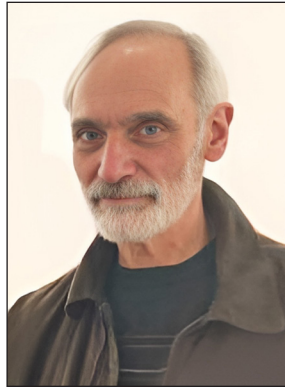
We have plenty to look forward to again on all fronts, in this new year. Keep LAA on your calendar, submit your best artwork, visit as much as you can, and support LAA’s programs and missions as well as you are able. And please, don’t hesitate to thank every member of LAA’s staff for making this all happen in a professional and seamless way.

We welcome three new members who were recently elected to LAA’s board of directors: the artists Brian McClear, Dr. Liane Phipotts, and Diana Rogers. We will expect plenty of input and advice from them as they begin their new level of dedicated service to the Association. We also welcome four outstanding artmakers who just joined LAA’s Elected Artists ranks: Besty Barry, Mike Laiuppa, Dr. Philpotts, and Jean Carol Potter. Their work is featured in the Congratulations show at LAA during the first several weeks of 2026.

2025 was a year of uncertainty for one or another reason. We proved, so far, that our venerable LAA can and will survive any new challenges once again. Enjoy this newsletter for more updates and details. And as always, ask any one of us, any “old” or new LAA board member, or any LAA staff member. We’re here for you. We wish you every success for this happy New Year. Share all of them, at LAA and elsewhere, at any time. We want to know.

Best wishes,

Michael Centrella for the Board of the Lyme Art Association [michael\\_ctart@yahoo.com](mailto:michael_ctart@yahoo.com)



### Board of Directors

Michael Centrella, President  
Del-Bourre Bach, Vice President  
Paul Sellier, Treasurer  
Lorraine Yurkewicz, Secretary  
John Beatty, Financial Planning  
Maura Cochran, Strategic Planning  
Debbi Goodman, Development  
Randie Kahl, Education & Activities  
Lois Lawrence, Governance  
Paul Loescher, Capital Project, Building & Grounds  
Brian McClear, Artistic Policy & Exhibitions  
Jeanne O’Brien, Education & Activities  
Liane Philpotts, Development, Spring Soiree Committee  
Diana Rogers, Education & Activities  
Katherine Simmons, Governance and Newsletter Editor  
David Zuckerbraun, Development

### Staff

Elsbeth Dowd, Executive Director  
Paul Michael, Gallery Manager  
Jolie Collins, Communications Manager  
Julia Braatz, Business Manager  
Sara Drought Nebel, Gallery Associate  
Sarah Kentoffio, Gallery Assistant  
Franceska Nebel, Development Assistant





## CHANGING OF THE GUARD

*We are delighted to announce important changes in our board and staff positions this year. Please join us in welcoming three new Board Members and a new member of Staff, each stepping into a vital role that will shape our organization's future.*

**Liane Philpotts**, Elected Artist, embraces her role in development activities, including our renowned Spring Soiree fundraiser. **Brian McClear**, Elected Artist, brings fresh ideas to the Artistic Policies & Exhibitions Committee (APEC), bringing fresh perspectives that will enhance our exhibitions. **Diana Rogers**, Associate Artist, contributes her expertise to our Education & Activities Committee, strengthening our educational programs and community engagement. Finally, join us in welcoming **Julia Braatz** as our new business manager who is invaluable in keeping operations humming. We are excited to benefit from the new ideas, energy, and expertise these individuals who will help us achieve our goals and expand our impact.

Are you interested in joining an LAA committee, joining the Board, or volunteering in any other capacity? Reach out to Elsbeth Dowd at [elsbeth@lymeartassociation.org](mailto:elsbeth@lymeartassociation.org).

We are especially seeking volunteers with strong local connections and those with an interest or experience in finances, marketing, and fundraising. If you have any experience with accessibility projects or advocacy, we would also particularly like to speak with you, as we are starting to plan for accessibility enhancements to our building.



Top row: Brian McClear, Lianne Philpotts, Diana Rogers.  
Bottom row: Sara Drought Nebel, Jolie Collins, Sarah Kentoffio, Julia Braatz, Elsbeth Dowd, Francesca Nebel, Paul Michael.

## PALATE TO PALETTE THURSDAY, OCTOBER 15, 2026

A magical evening of  
great art, happy art lovers, lively music, and delicious food!





## From Library Walls to Gallery Halls: A Historic Partnership Renewed

*Old Lyme has long been a place where art and community meet—and few relationships tell that story better than the enduring friendship between the Lyme Art Association (LAA) and the Old Lyme Phoebe Griffin Noyes Library. More than a century ago, before the Lyme Art Association had a building of its own, it was the library that first opened its doors to the town's artists. Today, that shared history is inspiring a new collaboration to bring even more arts opportunities to local children and families.*

**In the early 1900s, artists gathering in Old Lyme began organizing exhibitions to benefit the community.** One of the earliest and most meaningful milestones came in 1902, when the town's painters held their first group exhibition at the Phoebe Griffin Noyes Library—an event now recognized as a major moment in American art history and often described as the country's first summer art exhibition. The library remained a central venue for these annual exhibitions for years to come, and a 1916 New York Times feature captured the excitement of the time, describing Old Lyme's exhibitions and growing reputation as an art colony.

As the exhibitions grew and the number of artists expanded, the need for a permanent space became clear. LAA members and supporters eventually raised funds to construct their own gallery, which opened in 1921 and remains the home of the Lyme Art Association today. From the start, the story of LAA has been one of collaboration, civic spirit, and a commitment to keeping art visible and accessible in Old Lyme.

That commitment continues in the present day. The library and the Lyme Art Association have remained close partners and fellow champions of arts and culture on Lyme Street, both active members of the Old Lyme Arts District, which promotes creative life throughout the community.

*Now, LAA and the Phoebe are joining forces once again—this time to expand arts education for young people. For several years, LAA has offered its acclaimed “Represent!” program, designed to help children and families explore artists from diverse backgrounds through picture books illustrated by award-winning artists.*

Each session includes a story reading, discussion of the artist's life and style, and an art-making activity inspired by what participants have learned. At its heart, Represent! connects directly to LAA's mission: cultivating an appreciation for fine representational art while encouraging young people to reflect on what it means to represent someone or something—and whose stories are being told.

This fall, children's librarian Jadzia Childs proposed a partnership that will bring Represent! beyond LAA's gallery walls and into the community. LAA will continue to host its regular monthly sessions at the Lyme Art Association from November through March, and beginning this spring, Represent! will also be offered at the Phoebe Griffin Noyes Library. New sessions will include two after-school workshops for middle school students in March and April, followed by two summer sessions for elementary-aged children.

*This collaboration strengthens the long-standing connection between two institutions that have supported creativity in Old Lyme for generations. Just as artists once gathered at the library to share their work with the community, this new partnership ensures that young people today can experience art as something welcoming, meaningful, and shared.*



“First Annual Exhibition (1902)” Old Lyme Phoebe Griffin Noyes Library, Old Lyme, Connecticut. Photograph published New York Daily Tribune Sunday, August 31, 1902



James Woodhull Adams (1854-1921), *Construction of Lyme Art Association*, signed lower right “Woodhull Adams 1920”

**To learn more and to get involved in this partnership,  
contact Executive Director Elsbeth Dowd or visit [lymeartassociation.org/family-art/](http://lymeartassociation.org/family-art/).**





## 2026 REPRESENT! PROGRAM DATES

### AT THE LYME ART ASSOCIATION (Elementary-aged children & families)

Saturday, January 17, 11:00–12:30

Saturday, February 7, 11:00–12:30

Saturday, March 7, 11:00–12:30

### AT THE PHOEBE GRIFFIN NOYES LIBRARY

#### For Middle Schoolers (Grades 6–8)

Monday, March 23, 2:30–4:00

Monday, April 27, 2:30–4:00

#### For Elementary-Aged Children & Families

Thursday, July 9, 10:00–11:30

Thursday, August 6, 10:00–11:30





From the Archives:

## Coming Together: The 1902 Exhibition at the Phoebe Griffin Noyes Library – Elected Artist Katherine Simmons

*At the dawn of the 20th century, a remarkable group of artists traveled to Old Lyme, each inspired by personal dreams yet united by the allure of its breathtaking, paintable landscapes. Their shared passion led to the creation of a vibrant community—the Lyme Art Colony—which would later become the Lyme Art Association. This spirit of collaboration and creativity found a defining moment in 1902, when the newly opened Phoebe Noyes Griffin Noyes Library hosted an exhibition that would forever shape the legacy of art in Old Lyme.*

The 1902 exhibition of the Lyme Art Colony artists was more than an artistic showcase—it was a celebration of community spirit and generosity. Admission was just fifty cents, with every penny supporting the newly established public library, a beacon of learning brought to life by the vision of the Ladies Library Association and the philanthropy of Charles H. Ludington in honor of his mother-in-law Phoebe Griffin Noyes.

Visitors from near and far were welcomed, with exhibition posters thoughtfully listing train schedules from New Haven, New London, and Hartford, and offering livery service from the Lyme station. Guests were encouraged to enjoy a meal at the historic Old Lyme Inn, making the event a true gathering of art lovers and neighbors. Among the art on display were masterpieces by luminaries such as Henry Ward Ranger, William Henry Howe, Frank Du Mond, and Clark Voorhees—artists whose creativity helped shape the enduring legacy of Old Lyme.

**HENRY WARD RANGER (1858–1916)** discovered Florence Griswold’s boardinghouse in Old Lyme and was reminded of his days in France where he was heavily influenced by the Barbizon painters who embraced a style that emphasized natural light, atmospheric effects, and expressive, loose brushwork, moving away from tight, finished academic styles. In Old Lyme, he found friendship and encouragement at the Florence Griswold boardinghouse and encouraged other artists to experience the area. It wasn’t long before he established a studio in Old Lyme.

An early local article noted that Ranger “could often be seen smoking a cigar outside of his studio, a green shed like building near the “Holy House”, a good humored reference to Miss Flo’s boarding house, signifying the artists’ respect and affection for their hostess and the special community she fostered. Frank Dumond had a studio next to Ranger. Across the street in an upper loft was the studio of William Henry Howe, who was the uncle of the another Lyme Art Colony artist, William Howe Foote.

Ranger remained an active member of the Colony, exhibiting his work alongside fellow artists until his death in 1916. Afterward, when the Lyme Art Association inaugurated its new gallery just down the street from the library, his colleagues paid tribute to him by including his painting,



### IMAGES:

Historic photo of the Old Lyme Phoebe Griffin Noyes Gallery, <https://oldlymelibrary.org/about/history/>

Photograph of Henry Ward Ranger; <https://americanart.si.edu/artist/henry-ward-ranger-3939>



“Big Ledge, Marvin’s Island,” which was generously lent by the Carson Pirie & Scott Gallery. Although Carson, Pirie, Scott & Co. is best known today as a prominent Chicago department store, it once housed a distinguished art gallery within its flagship location, serving as a significant venue for American artists in the Midwest.

**CLARK GREENWOOD VOORHEES (1871-1933)** first visited Old Lyme, Connecticut in 1893. In 1896, he returned with his mother and sister, who stayed at Florence Griswold’s boarding house. By 1904, Voorhees had married and put down roots in Old Lyme.

He purchased an eighteenth-century home in Old Lyme and became an established resident. He played a very active role in the community, becoming a charter member of the town’s volunteer fire department and eventually, president of its library board. He also served as Secretary of the LAA Board in 1925.

While Voorhees often employed a Barbizon-derived, tonalist style, he adopted a more impressionist style when it suited the subject at hand, such as the painting shown below right of the artist’s garden. Voorhees exhibited with the Lyme Art Colony and later the Lyme Art Association from 1902 thru 1929.

**FRANK DUMOND (1865-1951)** A native of Rochester, New York, Frank DuMond became a renowned painter of luminous Impressionist landscapes as well as a teacher and illustrator and was associated with New England art colonies, especially Old Lyme where he first went in 1902. He became Director of the Lyme Summer School of Art, one of the foremost summer schools in the country.

A painter of diverse talents, he was an accomplished landscape, portrait and still life painter, and muralist. In particular, DuMond was noted for his use of landscape green. American Impressionist expert William H. Gerdts wrote of DuMond, “As one might speak of Velazquez’s blacks, one must speak of DuMond’s greens.” Scholars have described him as a deft painter of the American Impressionist landscape and the figure, but he will perhaps be remembered as among the most outstanding educators in American art history.

Dumond exhibited at LAA from 1902 to 1934. His painting “Top of the Hill” was painted across the road from his summer home on Grassy Hill in Lyme. Du-

*Continued on page 8*

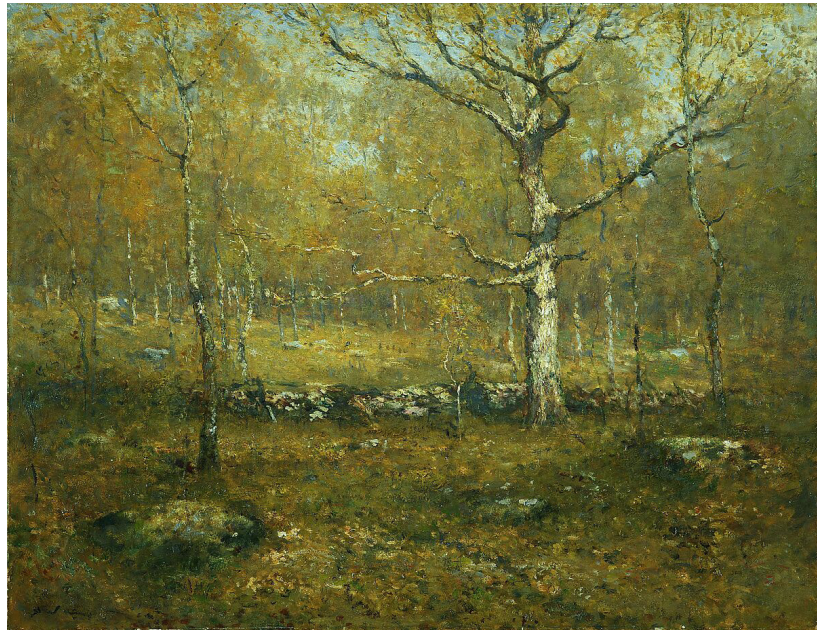
#### IMAGES:

Henry Ward Ranger, *Spring Woods*, c. 1895-1900. Metropolitan Museum of Art.

Photographs: Clark Voorhees at the easel and Frank Dumond, Lyme Art Association Archive

Clark Greenwood Voorhees, *My Garden*, c. 1933.

Wikipedia.org

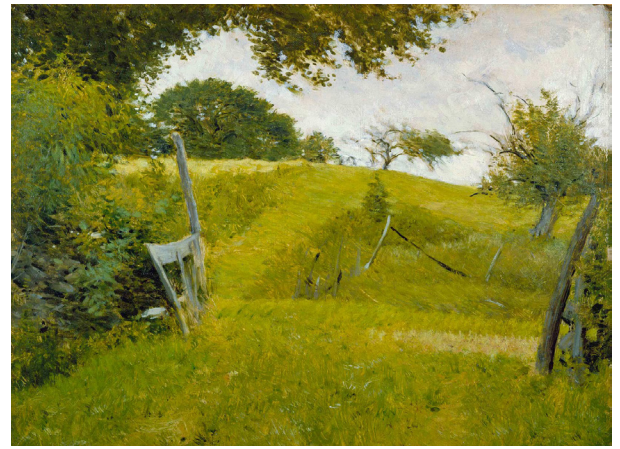
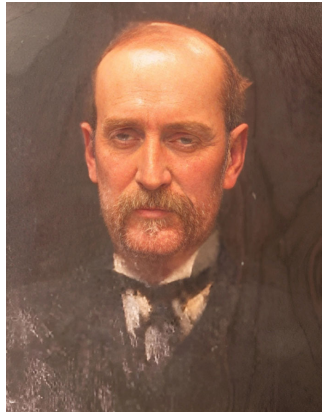




Mond expressed his affection for the area in a 1907 interview in *The New York Sun*, “Every year I grow more deeply attached to my summer place and less inclined to leave it.”

**WILLIAM HENRY HOWE (1846-1929)** was born in Ravenna, Ohio in 1846. No American artist was more thoroughly identified with the painting of cows than William Henry Howe.” In a style that combined Tonalism and Realism, he was a painter of light-filled pastoral landscapes that sometimes had sheep as well as cattle tended by their shepherds and herders.

Howe and his wife boarded with Miss Florence for many summers and being one of the first artists to board with Miss Florence, he was able to paint on one of the coveted doors in her parlor, filling two panels of the door with a regally reclining cow in a stable filled with golden light. Howe served as Lyme Art Association’s President (1921-1922) and exhibited regularly at the Association until his death.



#### IMAGES:

William Merritt Chase (1849-1916), *William Henry Howe*, 1895, oil on canvas, National Academy of Design, New York, NY.

Frank Dumond, *Top of the Hill*, c. 1906. [www.FloGris.org](http://www.FloGris.org)

William Henry Howe, *Monarch of the Farm*, 1891, Smithsonian American Art Museum, a Gift of Mrs. William Henry Howe, 1921.

**SOURCES:** Archive.org. FloGris.org. Wikipedia.org. AmericanArt.SI.edu. Archives at AskArt.com. OldLymeLibrary.orgLyme Art Association Archive.

### From First-Time Creators to Advanced Artists — Find Your Creative Fit at LAA!

The Lyme Art Association offers a great lineup of educational programs—designed to welcome artists of all ages, interests, and experience levels. Whether you’re looking for a gentle, creative introduction to art, a way to strengthen essential drawing skills, a fun hands-on experience for the whole family, or an opportunity to deepen your painting practice, there’s something here for you.



More Information at  
[www.LymeArtAssociation.org/Programs](http://www.LymeArtAssociation.org/Programs)

# WHOLESALE FRAME COMPANY

[Wholesaleframeco.com](http://Wholesaleframeco.com)

Professional Artist Frames





## CONGRATULATIONS *New Elected Artist Members*

**Betsy Barry** is a botanical artist specializing in colored pencil drawings that highlight the intricate beauty of the natural world. Botanical illustrations capture vivid textures and colors of natural subjects with precision and warmth, often drawn from life to convey immediacy and intimacy. Her artwork is featured in nature-inspired products, including tea towels, napkins, stationery, and trays, suitable as gifts or daily essentials. Recent offerings include Scenic Sketches—original paintings capturing nature's beauty on location—and wool hooked designs, each crafted to bring beauty into daily rituals. All pieces are handmade with care, celebrating the joy of creation.



**Mike Laiuppa** is a personal trainer and oil painter based in Simsbury, CT. Along with running his training business, he teaches painting at West Hartford Art League, workshops at Lyme Art Association, and private lessons. Mike's main focus is human and animal portraiture, but he also enjoys painting still-life. He is a member of both the Portrait Society of America and Oil Painters of America. *"Oil paint feels alive to me. It can be pushed, prodded, streaked, and steered. But no matter what you do to it, it will remain true to your intent. I find it a fascinating medium with which to create. It's by far the easiest I've played with, but truly the hardest to master. It's for these reasons, I feel drawn to commanding it."*



day objects, portrayed with dignity. Oil paint is Liane's preferred medium, with a style described as 'Painterly Realism.' Her process celebrates finding beauty in the ordinary. Each artwork reflects the importance of creating, connecting with nature, and appreciating the endless beauty found in the world.

**Jeanne Carol Potter** continually explores the unique qualities of the watercolor medium, painting a variety of subjects reflecting the world around her. "In my work I enjoy the challenge of painting figurative, nature and man-made themes ranging from the human face and the natural world of ponds to hand-made objects of glass. Each is different and unique, yet as subjects for painting, they all possess similar qualities of aesthetic and emotional appeal. I strive to capture the beauty with unique compositions, and transparent layers of color and light."

Art, above right: Betsy Barry, *Purple Blooming Hydrangea*, colored pencil; Mike Laiuppa, *Letting It Down*, oil. Art, left: Liane Philpotts, *Citrus and Silver*, oil; Jeanne Carol Potter, *Metamorphosis*, watercolor.

To be considered for election as an Elected Artist Member by the Lyme Art Association, a person must:

- Be an Associate Artist Member in good standing for a minimum of two years,
- Have exhibited a minimum of 3 paintings, drawings, prints or sculpture as an Associate Artist Member at the Association,
- Be committed to work actively at the Association, by serving as a Director, officer, or committee member, and helping in arranging and presenting the Association's exhibitions and programs.

If you have any questions, contact [paul@lymeartassociation.org](mailto:paul@lymeartassociation.org).



## Our Summer Challenge was a huge success - Thank You!



*Thanks to the generosity of our members and friends, the Lyme Art Association's Summer Challenge was a resounding success. Our community rallied to support essential improvements, raising \$16,380 through the Summer Challenge. These contributions, along with additional gifts, enabled us to complete key projects that enhance the beauty and functionality of our campus.*

We extend special thanks to Bob Potter, whose art talk proceeds helped address long-standing needs. Together, we resurfaced the gravel driveway and parking lot for a smoother entrance, removed a dying tree to improve safety and sightlines, and pruned throughout the grounds to restore landscape health. The Halls Road slope, once a challenge, now features stabilizing boulders and native plantings that will bloom vibrantly each year adding color and texture to this view of the Association grounds.

Community support made these achievements possible. We are grateful for in-kind donations—asters from Laurel Friedman and oat grass from the Duck River Garden Club—and for volunteers like the Pfizer team, who planted perennials and bulbs with care. Ongoing thanks go to Pete Lacey for his dedicated work against invasive Japanese Knotweed.

*To everyone who contributed, volunteered, or supported in any way—thank you. Your generosity ensures the Lyme Art Association remains a cherished and welcoming place for all.*



***On February 7 at 3 pm, join master watercolorist Jeanne Carol Potter at the Lyme Art Association for an inspiring art talk, “My Life in Watercolor.”***

Discover how Jeanne transformed passion into artistry, drawing from early education at the Carnegie Museum and the vibrant energy of Pittsburgh's steel mills. Influenced by legends like John Singer Sargent and Vermeer, Jeanne shares travel sketchbooks, career highlights, and watercolor techniques—inviting you to see the world through an artist's eyes  
Saturday, February 7 at 3 pm | Tickets: \$10 per person | [Register for this Art Talk](#)





## 2025 Report

### Contributions: Annual Fund, Membership, Scholarship Donations, Special Events, & Sponsorships

#### \$25,000 +

Anne Bingham Pierson

#### \$10,000 – \$24,999

The Herb Chambers Charitable Foundation

The Kitchings Family Foundation

#### \$5,000 – \$9,999

Maura M. Cochran  
State Of Connecticut  
Economic & Community Development,  
Connecticut Office of the Arts

The Cooper Family  
Debbi & David Goodman  
J. David Kelsey  
Melissa Meredith

Neil Ruenzel  
Town Of Old Lyme  
Dawn Tyler

#### \$1,000 – \$4,999

Mary Alden  
Antonacci Family Foundation  
Del-Bourree & Kristen Bach  
Vermont Community Foundation  
John & Sue Beatty  
Michael Centrella  
Ascend Bank in partnership with the  
Community Foundation  
Of Middlesex County  
Pamela Danneman  
Judith Duran  
Eileen Eder

Martha Everett  
Joan Flynn  
Fox Hopyard Golf Club  
Michael Greene  
Essex Meadows LLC  
Chelsea Groton Foundation  
Cornelio Hong  
Cathy Liontas  
Sarah Stifler Lucas  
Scott B. Macdonough  
Susan Malan of William Pitt  
Sotheby's International Realty

Eastern Regional Tourism District  
Jeff Mehler & Mary Russell  
Lee & Michele Mergy  
Ella & Brent Moyer  
Lauren & Andrew O'Reilly  
Brewster Perkins  
Pam Peters  
Liane Philpotts  
Waterview Landscaping, LLC  
Francisco Ribas & David Lewis, Jr.  
Steven & Frani Ross  
Sapia Builders, Corp

Theodore & Erin Schaaf  
Beverly Schirmeier  
Lynn Scully  
Ryan & Hayley Scully  
Paul Sellier  
Chris & Erin Staab  
Susan Staab  
Mercer Global Advisors Inc.  
Caroline Walters  
David & Gail Zuckerbraun

#### \$500 – \$999

Anonymous  
Nancy Bass  
Eugene & Jacqueline Blomberg  
Dr. & Mrs. Timothy Braatz  
Michael & Eloise Brady  
Anthony Cascio  
Rebecca & Ted Crosby  
Ruth & Peter Emblin  
Jennie & Bretton Enman  
Essex Savings Bank  
John Frank  
John Hargraves & Nancy Newcomb  
Anne Haviland & Russell Sharp  
Bo Jacaruso  
William Jacaruso

Patricia Jones  
Randie Kahrl  
Bluewater  
Millwork & Construction  
Suzanne Lewis  
Pietrina L. Luciani-Saxton  
Barbara Lussier  
Linda Mariani  
Kieran & Laura Mooney  
Nancy Mesham Team at  
Coldwell Banker Realty  
Leif Nilsson  
Jeanne O'Brien  
Mary Lyn & John Page  
Mark & Juner Patnode

Elena & Michael Patterson  
Chris Penniman  
Eleanor Perkins  
Judy Rasmuson  
Sloan Danenhower & Judith Read  
William Reeves  
River Valley Periodontics  
& Implant Dentistry  
Martha & Dave Rogers  
Diana Rogers  
James & Amanda Rutledge  
Elizabeth Sandri  
Nancy Schroeder  
Audrey and Neil Scollan  
Katherine Simmons

Robert & Alice Smith  
Lucia Sokol  
Saul & Esther Spiegel  
Barbara & Len Swec  
Ceal Swift  
Susan Termyn  
David & Pamela Thompson  
Masonicare at Chester Village  
Katherine Tolsdorf  
Reynolds' Subaru & Boats  
Kathryn Wayland  
Pandy & John Wohler  
Andrew Young  
Lorraine Yurkewicz

#### \$100 – \$499

Dolores Acosta  
Jacqueline Adamson  
James Anderson  
Elizabeth Attebery  
Howard Averill  
William & Jane  
Bachman  
Joann Ballinger  
Charles F Barbour  
Michael Barrett  
Betsy Barry

Harley Bartlett  
Carey Alexander  
& Christine Bassett  
Serena Bates  
Bill Belluzzi  
Norman & Sally Bender  
Roseann Berluti  
James Berryman  
Mary Ann Besier  
Phyllis Bevington  
Cari Blanchard

Linda Boisvert DeStefanis  
Thomas & Jane Boyd  
Robert Linde  
& Joan Bozek  
P.J. Brewer  
Kay Brigante  
Nicoll Cadwalader Brinley  
Joy Bristol  
Jack Broderick  
Diane Brown  
Leslie Bubello

Robert Buda  
Trudy Burgess  
Kathleen & Arthur Bogen  
William Burnham  
Rebecca Butler  
Mary Byrnes  
Mark Cabell & Megan McMahon  
John Caggiano  
Peggy & Grant Cambridge  
Siesel & Katy Canaday  
I. L. & Linda Cantner

Mona Cappuccio  
Jonathan & Michele  
Carlisle  
Polly Carta  
Ann & David Chan  
Thomas Fitzpatrick & Camille  
Chwalek  
Susanne Colten-Carey  
Maureen Conlin  
Stephanie Conrad  
Matt Conroy



Bob Cope: Honey Hill Property Management Barbara Cordell Rosemary Cotnoir Jacqueline Crawley Cara Crimmins Timothy Cummings Peter & Karen Cummins Patricia D'Ambra Sandra Daignault Susanna DalPonte Sloan Danenhower Rick Daskam Adam Davis Margaret Dean Carol deBerry Jeannette Delmore Kathleen DeMeo MJ DeRisio Robert Dietz Andrea Donald Elsbeth & Tim Dowd Sara Drought Nebel Carol Dunn Robert & Nancy Dunn Kerry Eaton Terry Eddy Jeb & Dianne Embree Angie Falstrom Ned Farman Lorraine Ficara Elizabeth Flick Faripour Forouhar Scott Gardiner Rose Mary Gates George & Gretchen Gauthier Ted & Karin Genard Judy Gerber Tom & Evelyn Gezo Donna Gilberto Maryann Gilmartin Nancy Gladwell Elizabeth Goor Michael Graves Jacquelyn Clark Grimwade Timothy Griswold Marina Grossi Wendy Gunn Robert & Wendy Gunn Rosemary Gupride Barbara Hageman James Hall	Robin Hammeal-Urban V.F. McNeil & Company Marisa & Jeffrey Hartmann Lea Harty Garnet Herring Wrigley Liselotte Hess Sue Hessel & Karen Dahle Jenny Holland Jennifer Holmes Robin Hong HP Broom Housewright Nancy Bauer Howell Sunil Howlader & Diane Skaleris Faulkner Hunt Paul & Regan Huntley Ellen Hurley Melissa Imossi Michele Imossi Christine D Ivers Rick Izzo Dan Jeffries Suzanne Joffray Helene Johnson Jackie Jones Robert Jose Vince Kalish Mary Katz Sara Kelly Lynn Kentoffio John Kiker Earl Grenville Killeen Margaret Kiss Jane Penfield & David Klotz Patricia Koschek Deborah Kotchen Henie Kurzman Janet Lage Michaelle Pearson & Jim Lampos Isabel Lane Elin Larson Jack Laun Jim Laurino Lois Lawrence Sharon Lefebvre Lisa Lehner Edward Alan Lent Andy & Cindy Lightner Susan Lippman Madison Art Society Gigi Horr Liverant Paul Loescher	Maureen Lopes Bernice Lord Carol M David Madacsi Barbara Maiser Julie & Ron Malloy Kathy Mann Paul Manning Julie Martel Donna Martell Shaun Mastroianni Susan McCawley Brian McClear Linda McKenna Timothy McLaughlin Meghan McLean Betsy McManus Bernard McTigue Lisa Miceli Alisha Milardo Muriel Miller Sandy Mills Jack Montmeat Pamela Morgan Thomas Moriarty & Pamela Stevens Diann Morrison Molly Moser Kim Muller-Thym Greg Murry Laura Natusch Diane Cheshire Nazarko Richard Nazzaro Colleen Neutra Victoria & Alexander Newton John & Heidi Niblack Claire Nichols Marcelle Niles David & Linda Nolf Robert Noreika John & Barbara Noyes Jane O'Donnell Dan & Margaret O'Shea Nancy Oates Jonathan Richards & Patricia Ouwerkerk Bobbie & John Padgett Louis Paffumi Maureen Page Howard Park Gary Parrington Deb Paulson	Laurie & John Pavlos James & Jacquelyn Pedrick Alicia Pena Mari Judith Peritz MacCurdy Salisbury Educational Foundation, Inc. Judy Perry Mary Jane Peterson Patrice Petricone Edward & Linda Pinn Crista Pisano Steven Plaziak Pledgeling Foundation Robert and Jeanne Potter Susan Powell Dave & Barbara Preston Suzanne Price Vanessa Prigioneiri Steve Prigionieri Catherine Puccio Raymond Pupedis Deborah Quinn-Munson David Rackey Richard Raicik Frank Raphael Andre & Louise Ravsen Scott Rhoades Maira Rieger Amanda Rinaldi Nina Ritson Robyn Rivers Diana Roberts-Paschall Janine Robertson Janet Romanowski Lindsey Rotolo Emily Rueb Kimberly Ruggiero Maryanne Rupp Joan Ryan Andy Sachs Cherie Sapia Faith Satterfield Starr Sayres June Schoppe Matthew Schwager Kimberley Scoble Caroline Scott Karen Sega Conrad Seifert Shauna Shane Susan Shaw Patricia M Shippee	John Shutkin Sheree & Skip Sibley Michael & Anna Sillberberg Dennis Sirrine Lorraine Skelskey Chapin Richard & Patty Skinner Barbara Smith Penelope Smyth Bill Sonstrom Cheryl Sorensen Peter & Elizabeth Sorensen Sandra Spahr Peter Steere Tom & Jeanne Stewart Dana Stoddard Shawn Sullivan John Sutphen Jennifer Symonds Sharon & Frank Tarala Bette Taylor Lisa Tellier Jennifer Thompson Josh Thompson Beard Lumber Company Pamela Townshend Kathleen Tracy Peggy Traskos John Traynor Kathy Turner Howard & Peg Tuttle Edie Twining & Mark Terwilliger Susan Van Winkle Richard Vencus Alexandra Von Raab KV Designs Laurie & C. Michael Walker Joan Wallace Jean Watson Rosemary Webber Patricia & Robert Whisker Nelson White Chester White Katherine Wilkes Lucy Wilkinson Ann Williams Thomas Wing Shirley Cean Youngs Jocelyn Zallinger Christopher Zhang David Zita Vivian Zoe Theresa Zwart-Ludeman
--	---	---	--	--

### Up to \$99

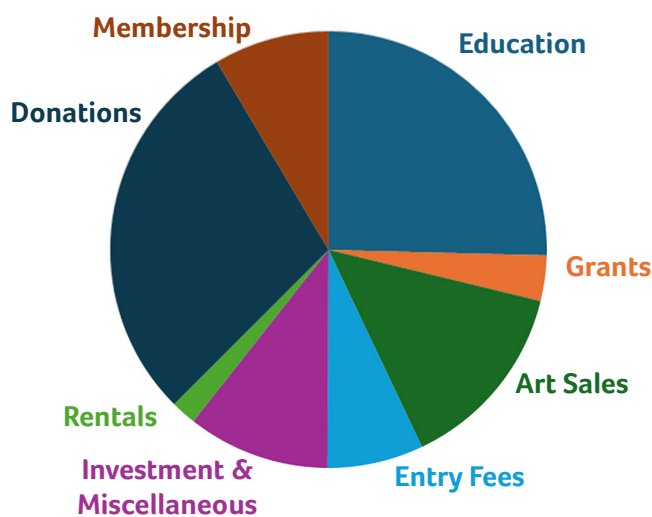
Christine Acebo Kim Adams Andria Alex Barbara Alex	Christine Anderson Eric Anderson Julia Angier Anonymous 1	Anonymous 2 Nancy Armstrong Patricia Atkins Dora Atwater-Millikin	Marjan Babaie Nasr Jay Babina Peter Barrett Cynthia Barton	Sarah Baskin Marna Bastian Reena Bates Polly Baumer	Linda Beagle Donato Beauchaine Brenda L Bechtel Jim & Janet Bechtel
---	--	--	---	--	--



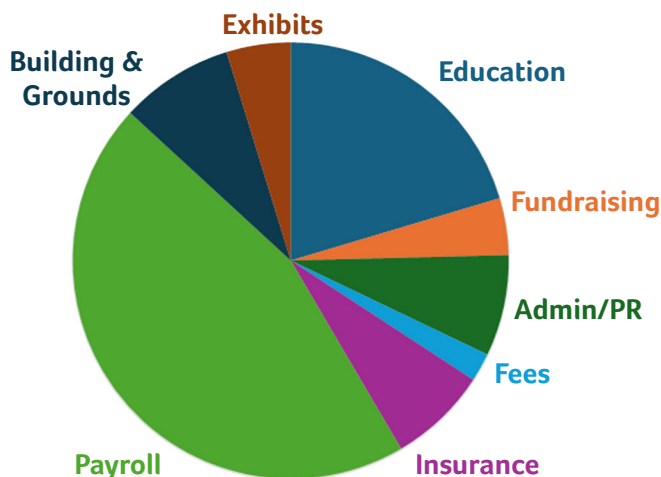
Emma Belcourt	Nancy Boudreau	Barbara Butterworth	Katherine	Teddi Curtiss	Josie Campbell Dellenbaugh
Dina Belyayeva	Carol Boynton	Nancy Calder	Clark-Nilsson	Mary Ann D'Ambruoso	Dan DeLouise
Christine Bensche	Colleen Bozarth	Scott Camassar	Anne Coffey	Sam D'Ambruoso	Cynthia Demand
Rino & Mary Bergonzi	Jill Brabant	Julianna W Cameron	Carole Constant	Dodie D'Oench	Robert DeMatteo
Mike Berlinski	Wilson & Victoria	Maria Campbell	Charles & Carolyn Cook	Ramzi Dagher	Diane DePaola
Lucretia Bingham	Bradford	John Canale	Maryann Beatty Cook	Guy Daigle	David DePeano
Hugh Birdsall	Victoria Brodaski	Linda Cantner	Merina Corby	Jessica Daigle	Nicole Desanti
Dawn Bisharat	Maren Brown	Mary Carey	Erin Cordle	Denette Dasinger	Mally DeSomma
Sarah Bishop	Bethany Browne	Devin Carney	Romeo Jr Cortez	Kathy Daudish	Michelle DiCesare
John Blair	Steve Brunetti	Jennifer Chaffee	Vickie Cotton	Nancy Davis	Rick Dickinson
Tammy Blais	Alison Brush	Joanna Chapin	Trudy Cox	George B. Davison	Michael DiGiorgio
Brenda Blom	Martha Burian	T. A. Charron	Kristin Crawford	Michael de Gruchy	J.R. Dill
Maria Boisvert	William Butcher	Kelly Clark	Stacey Creem	John De Laura	Suzanne DiSessa
Andrea Borden	Jill Butcher	Eileen Clark	Margaret Crowther	Robert Louis Del Russo	Danielle Divito

**Thank you to everyone who has contributed to the Lyme Art Association.  
We are deeply grateful for your support!**

## INCOME



## EXPENSE



Diane Dooley	Ethel Feltham	Dorothy Gibb	Sarah Grote	Diane Holtzworth	Keiko Kaiser
Ken Dorros	Keith Michael Fiels	Barbara Fisk Gibson	Aleta Gudelski	Will Holub	Philip & Sandra
Christine Drago	Stephen Finnigan	Susan Gilbert	Mary Guitar	Laura Hopkins	Karakoosh
Tamara Duffy	Sean Fitzpatrick	Doug Gillespie	Geraldine Hallgren	Errol Horner	Lisa Kassow
Gina Dunlap	Cindy Flanagan	David Giordano	Jessica Hampton	Jacob Houghton	Shawn Kenney
Mary Jane Dunn	Judith Flemming	Marsha Gliha	Joan Handschumacher	William B. Hoyt &	Eileen Kenny
Javier Eastman	Kelli Folsom	Brian Godburn	Anne Harhay	Kathryn Bailey	Sarah Kentoffio
Liz Egan	Kimberly Ford	Hilary Goduti	Gail Harris	Lee Hutt	Leah Raechel Killeen
Linda & Matthew Elgart	Catherine Francucci	Margaret Gordon	Theresa Hartley	Kieran Hyland	Mary Killilea
Vincent Elliott	Carol Frieswick	Dianne Gorrick-Breiland	Daryl Hartman	Laureen	Jean Callan King
Patti Emanuel	Lynn Frink	Patricia Grabel	K Hartmann	Hylka Wondolowski	Terri Kinney
Paula Emery	Rosalyn Frishman	Denise Gravatt	Mary Ann Heenehan	Gail Ingis	Marilyn Kinzel
Margaret Emond	Lorraine Funk	Deborah Greco	John & Ross Higgins	Richard Inerra	Maxine Klein
Carole Erdman	Carol Ganick	Joyce E Greene	David Hinchin	Alison Ives	Carol Klimek
Betsey Evarts	Nancy Gardner	Ellen Gregory	Julie Hobert	Shelley Jacobson	Ann Knickerbocker
MaryJ Eyster	Skye Garofalo	Hilary Griffin	David Hoffman	Daria Jankura	Kay Knight Clarke
Alexander	Elise Garvin	Deborah Griffith	Charles Hollinger	Julien Jarreau	Didem Kakturk
Farquharson	Jessica Geervliet	Caroline Griswold	Thomas Hollinger	Graham Jeffrey	Anthony & Lee Ann
Susan Fehlinger	Maureen Gianni	Emily Griswold	Marianne Holtermann	Susan Jositas	Kornacki

Susan Krauss	Joanne McCarty	Brenda Newbegin	Lynda Pyka	Anne Shannon	Joshua C. Torrance
Donovan krebs	Molly McDonald	Anne Nicholas	Jon Quinn	Cindy Shaw	Thomas Torrenti
Martin Kreiswirth	Kevin McGlinchey	Dan Nichols	Jennifer Rand	Charles Shaw	Bryan R. Tyler
Maureen Kuehler	Jane McGraw-Teubner	Jeri Nichols	Catherine Raynes	Beth Shluger	Margaret Vail
Patricia B Kurlansky	Lorna McLaughlin	Suzanne Nielsen	Pamela Reese	Patricia Shoemaker	Claudia Van Nes
Kathy Kuryla	Maura McQueeney	Judith Niosi	Suzanne Reeves	Linda Sinacola	Dorothy Van Rhijn
Madeline Kwasniewski	Joan Meakin	Marilee B Noonan	Isaac Regett	Sherlene Skov	Jan Vanderburg
Marie Therese Lacroix	Elaine Meisenzahl	Mary Noonan	Lynda Regina	Caroline Slabinski	Kevin VanHentenryck
Gerald LaGrange	Craig Melin	Sue Norton	Arthur & Hilde	Lea Sloan	Daphne Vayos
Mike Laiuppa	Lawrence & Martha Mello	Susan Nye	Reichenbach	Allan Small	Ivona Verbeke
CLJ Lancaster	Marina Melluzzo	Mary O'Connor	Dorothy Reiss	Karen Smith	Mary Vigneau
Kate Lancraft	Michael Mendel	Susan O'Shea	Diane Remetta	Michael Elwin Smith	Nina Viscardi
Leslie Landau	Newton & Polly Merrill	Constance OBrien	Edith Reynolds	Kathleen Smits	Mary Volk
Anita Langford	Phyllis Meyer	Cynthia Opaluch	Alison Ritrovato	Margaret Sola	Ann Volpe
Kirk Larsen	Judith Meyers	Heidi Palmer	Jane Robbins	Joan Sonnanburg	Andrea Wald
Thomas Lata	Matt Miller	Margaret Palmisano	Susan Rollins	Marjorie Sopkin	Grace Wall
Carolyn Latanision	Helen Miller	Laura Palumbo	Sylvina Rollins	Marla Speer	Michele Walsh-Gorres
Karen Lazerowich	Mary Anne	Sarah Paolucci	Olivia Ann Rolston	Roxanne Stachelek	Melanie Ward
Robert Leaver	Miller-Baker	Laura Paray	Lynn Sadlon	Suzanne Starr	Philip Warner
Debra Lee	Julie Millus Beckham	Sherry Pensak	Lisa Sanders	John Steinmetz	Melanie Watrous
Norman Legassie	Susan Missel	Grace Perez	Ellis Santandrea	Jacqueline Stella	Anna Webersen
Susan Leggitt	Ginny Moffitt	Nancy Perkins	Jennifer Sargent	Richard Stephen	Stephanie Weiner
Werner & Bobbi Liepolt	Katie Moirs	Nancy Perlin	Jeffrey Saverine	Mona Stratos	Brian Wendler
Sarah Lightfoot Brundage	Harold Moore	Paula Perlini	Anna Scanlon	Ashley Stringer	Peggy West
Anita Lind	Amy Moreno	Candace Petrucci	Judith Schaaf	Lila Strohl	Alex Wetmore
Lisa Linehan	Mars Morgan	Quyen Phan	George Schaub	Nancy Strohla	Cheri Weymann
Karen Lipeika	Brechin Morgan	Jacqueline Phillips	Philip Schenck & Mary	Janet G. & Ralph Sturges	Richard White
Patti Lizotte	Nancy Morris	Fran Picchioni	Alice Wildness	Anda Styler	Kristen Widham
J.D. Lloyd	Virginia Morrissey	Lucy Pierpont	Erica Schillawski	Chantal Sulkow	Linda Wilkinson
John Locke	Bilodeau	Carolyn Pike	Andrea Schneider	Karen Suponski	Lea P. Wilson
Dorothy Lorenze	Dorothy Mosser	Pamela Pike Gordinier	Linda Schwab	Amanda Surveski	Susan Winkel
Ariane Luckey	Thomas Moukawsher	Jeanne Pinto	Neil Scollan	Steve Sweeny	Garth Wlochowski
Michael Lynch	Henrietta Mountz	Cheryl Poirier	Elizabeth Scott	Tom Swimm	Peter Wlochowski
Linda Lynch	Jodi Muench	Karen Ponelli	Ann Scott	Vanessa Talcott Kendrick	Tricia Wood
Carol & Robert Lyons	Anne Mulholland	John & Rebecca Pote	Barry Seelig	Cindy Taylor	Debra Wool
Terrence MacLaren	Joan Mullins	Jeanne & Robert Potter	Mary Seidner	Cameron Taylor	Lynn E Wrona
James Magner	Edward Mundy	Sherry Pratt-Totten	Row Selman	B.L. Taylor	Big Y
Keith Magner	Linda Murphy	Karen Prendergast	Hillary Seltzer	Kelly Taylor	Loretta Yoder
Janet Maher	John Murray	Donna Presnell	Stephen Senatro	Cheryl Tenn	Diana Young
Rosemary Markham	Sean Murtha	Judy Preston	Blanche Serban	Joyce Therieault	Desiree Zaslow
Dale Matheny	James Napoleon	Laurie Pribble	Kathryn Shagas	Monte Thompson	Joan Zawacki
George Mattingly	Franceska Nebel	Laurie Prinz	Amalia Shaltiel	Grant Thomson	Kerui Zhou
Joyce Maurice	Liz Neighbors	Pat Procko	Barbara Shanley	Nick Thomson	Susan Zilke
Michelle Mazzarella	Cheryl Neumann	Patricia Proctor	Meghan Shanley	Kris Toohey	Avi Zilz
		Rossella & Joe Pulit	Waskowitz		

### In Kind Contributions by Business & Individual Services

Athletic Brewing Company	Flanders Fish Market and Restaurant	Jerry's Artarama Of CT	Rob Rivers Salon & Spa
Bank Square Books	Fresh Salt	Jess Newman Photography	Saybrook Point Inn & Spa
The Barefoot Gardener	Fromage Fine Foods	LymeLine.com	Sayulita
Café SoL	The Garde Arts Center	Mystic Yoga Shala	The Spring Wellness Center
Coffee's Country Market	Gourmet Galley Catering	New Britain Museum of	Stonington Frame Shoppe
Connected Systems LLC	Guiliano's Bakery	American Art	Tree Trails Adventures Mystic
Connecticut Rental Center, Inc.	Hartford Yard Goats	The Ocean House	Two Bees Design Studio
CWPM	Hydrangeas Galore	Old Lyme Inn	Wadsworth Antheneum
Donahue's Madison Beach Grille	Institute of Contemporary	On the Fly Mixology	Wholesale Frame Company LLC
The Essex Steam Train & Riverboat	Art Boston	On The Rocks At Fox Hopyard	
Finer Line Gallery	Ivoryton Playhouse	Pica Chica Tacos	



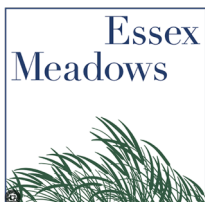
## In Kind Contributions by Artists

Andria Alex	Ken Dorros	Isabel Lane	Robert Noreika	Catherine Puccio	Chapin
Charles F Barbour	Eileen Eder	Jim Laurino	Jeanne OBrien	Lynda Pyka	Lucia Sokol
Del-Bourree Bach	Debbi Goodman	Lois Lawrence	Howard Park	Deborah Quinn-Munson	Cheryl Sorensen
Lucretia Bingham	Hilary Griffin	Paul Loescher	Judy Perry	Janine Robertson	Len Swec
Kay Brigante	Anne Haviland	Sarah Stifler Lucas	Pam Peters	Diana Rogers	Tula Telfair
Michael Centrella	Melissa Imossi	Barbara Maiser	Patrice Petricone	Kimberly Ruggiero	Susan Termyn
Maura Cochran	Randie Kahrl	Lisa Miceli	Quyen Phan	Nick Salerno	Grant Thomson
Rosemary Cotnoir	Sara Kelly	Greg Murry	Liane Philpotts	Beverly Schirmeier	Susan Trombly
Dodie D'Oench	Sarah Kentoffio	Sara Drought Nebel	Jeanne Pinto	Lynn Scully	Susan Van Winkle
Mally DeSomma	Earl Grenville Killeen	Lori Neumann	Steven Plaziak	Blanche Serban	Lorraine Yurkewicz
Danielle Divito	Mike Laiuppa	Leif Nilsson	Karen Ponelli	Lorraine Skelskey	Christopher Zhang
					Vivian Zoe

## Volunteers

Del-Bourree Bach	Sue Dalponte	Kieran Hyland	Paul Loescher	Nina Ritson	Katherine Simmons
Harley Bartlett	Margaret Jane DeRisio	Melissa Imossi	Sarah Stifler Lucas	Janine Robertson	Jessica Southwick
John Beatty	Linda Boisvert DeStefanis	Randie Karl	Barbara Maiser	Diana Rogers	Ceal Swift
Dawn Bisharat	Todd Field	Earl Grenville Killeen	Steve Mizerek	Steven Ross	Fran Violante
Ryan Bitar	Ann Gagnon	Henie Kurzman	Jack Montmeat	Nick Salerno	Candice Wiegler-Spier
Michael Centrella	Donna Gilberto	Peter Lacey	Jeanne O'Brien	Kim Sapia	Lorraine Yurkewicz
Diane Chandler	Debbi Goodman	Isabel Lane	Judy Perry	Erin Schaaf	Jane Zisk
Roger Clements	Hilary Griffin	Lois Lawrence	Liane Philpotts	Beverly Schirmeier	Vivian Zoe
Maura Cochran	Anne Haviland	Debra Lee	Catherine Puccio	Matthew Schwaeger	David Zuckerbraun
	Jennifer Holmes	Tom Lee	Lynda Pyka	Paul Sellier	
	Hugh Hunsinger	Al Lochiatto	Barbara Resnick	Charles Shaw	

## Institutional Partners & Major Exhibition Sponsors



Earl Grenville Killeen is an exceptional artist who transforms rusted and discarded objects into vibrant, memorable works. His paintings, rich with life and stories, reflect a long and successful career in visual arts as both artist and author. After studying at the Art Students League in NYC, Earl Grenville Killeen has been active in Connecticut's art community since 1981. In the past decade, he renewed his focus on watercolors and iconic themes, earning over twenty-five awards in juried shows in just six years.

With deep affection for the Lyme Art Association, Earl Grenville Killeen has donated much of his work to benefit LAA. His paintings are available at reduced prices, hoping to find new homes with friends and collectors. View all pieces on our website or at the gallery. For purchases, please call 860-434-7802.

In the end, we may never be able to see another machine gear part or maple seed pod without recalling Earl's discerning eye or subtle humor.

**Several of Earl's pieces have recently been acquired by the Florence Griswold Museum for their permanent collection, ensuring Earl's legacy lives on in the history of American art.**





90 Lyme Street  
Old Lyme CT 06371

